

K12-Pro

Sheng Jay Automation Technologies Co., Ltd.



CAR DVR

Full HD 1080P



ZOOM



LOOP RD



Sensor



Super capacitor



2.4" LCD



SD/SDHC



Mp4



Full HD Quality
Video Record

Content

Product Description.....	2
Caution	3
Product	6
Feature.....	9
LCD Display	12
Setting mode	13
Setting Mode option.....	14
1. Format	15
2. Movie Resolution.....	15
3. Datetime	16
4. Audio	16
5. Language.....	17
6. TV	17
7. About.....	18
K12-Pro Specification.....	18

Product Description

The K12-pro support full HD video recording. All the recorded

data save in the SD memory card and use can view the recorded video via embedded 2'4 inch LCD. The most important feature of k11 is to clarify responsibility when accident occurs. The truth can be restored in seconds.

Caution

- Keep the device away from chemicals or detergents as they may change the surface and damage the product. Do not control or operate the device with wet hands - it may cause electric shock.
- Do not spray water directly on to the product. It may cause damage to the product, fire or cause an electric shock.
- Do not try to operate and download events etc while driving.
- Please ensure the product is installed tightly and do not move the device after installation.
- Please keep the lens clean and clear. If other objects are placed around the camera, they may be reflected on the window and included in the

video images.

- Please do not leave unnecessary objects around the device.
- If a damaged or a non-authentic SD card is used, the recorded data maybe damaged or will not record.
- Device warm up time is around 20 seconds, please wait patiently.

Caution : If user does not comply with the caution note, it may cause product damaged.

B. Installation caution

- Please ensure you use the power cable provided in the package. Other power cables may cause damage to the product, fire or cause electric shock.
- Do not take out the SD car when device is powered on , must turn off the device before take out the SD card. The important data must be backed up. We do not assume any responsibility

for any data lost

● **C. Interference**

Keep product's distance from electronic equipment that could emit electromagnetic waves such as GPS navigation device or cell phone. The electromagnetic waves would affect record quality.

D. Maintenance

Do not disassemble, repair, or alter the product. Any malfunctions, errors, or product damage are found attributable to user, user may not be qualified for warranty service.

Product



A:Power On/Off

B:MIC

C: Cradle connector

D:Camera

E: SD Slot

F: AV OUT

G:Earphone

H:LCD On/Off

I: GPS receiver input

J:Power Input

K:Indicator

L: Function Key

M:2.4 inch LCD

Function Key



A: Backward:

Non-recording mode: Enter setting mode.

Video Mode: select previous video / video play backward

Setting mode: Back to non-recording mode

B: Forward:

Video Mode: Next Video/Video Forward

Setting mode: Enter next step

C: Video mode:

In Non-recording mode: Enter Video mode

D: Up:

Recording mode: Zoom In

Setting: UP

Video mode: volume up

E: Down:

Recording mode: Zoom out

Setting mode: down

Video mode: volume down

F: Enter

Record: Record/Non-record Video: Play/Pause

Setting Mode: Enter

Package

1.Main unit*1	2.Power Cable*1
 A black rectangular device with a screen displaying a road scene. The screen shows the number '0114-0024' and the time '00:00:57'. Below the screen, it says 'Strong Jay Black Box'.	 A black power cable with a cigarette lighter plug on one end and a connector on the other.
3.Manual*1	4. Cradle*1
 A blue book with a white label on the cover.	 A black cradle with a suction cup on top and a connector on the bottom.

※Please check Package

※GPS Receiver(Optional). This device has no navigation function. The GPS receiver only receive GPS and display on the recorded video only

Product Feature

1. Auto Recording
2. high quality 2.4' LCD
3. Full HD video recording quality
4. Support MP4 format
5. Support 4-32GB SDHC SD card
6. G-Sensor
7. Loop record
8. Super capacitor
9. Zoom in/Out

Feature

1. Auto Recording ;

Start recording data when turn on the vehicle.
Stop recording while vehicle is turned off
then saves last file to SD card.

2. 2.4' LCD

The high quality 2.4' LCD can let you view recorded data in anytime.

3. Full HD Quality Video Record

1080 P /HD 1920x1080 pixel , FPS 30

Bring you back to the scene.

4. MPEG/MP4 Format

No need to install new software. The recorded data can be played in various video player program such as Gretech Online Movie Player , Daum potplayer, KM Player.

5. Support4-32GB SDHC SD

Use 32GB SD card can record 8 hours data recording.

After SD is full, overwrite old file to SD.

6. G-Sensor

Saves and analyzes data after get impacted. System analyzes impacted data then show on PC to display to impact 's direction, and strength.

7. Loop Recording

Continue recording to keep updating newest data. For example, if SD card is full, the system erases oldest file, and save new file to instead of oldest one.

8. Super capacitor

It is safer than the lithium battery. Save the last file after vehicle is turned off.

9. Zoom

Zoom in or out to get clear image.

Feature	G-SENSOR
	Auto turn on after cat is started
	Loading date and time
	System erases oldest file, and save new file to instead of oldest one.
	Create one video file per two minute and no gap between each file.

Super capacitor · Save the last file after vehicle is turned off. Resistant to high temperatures

Simple design with easy installation and operation

GPS Receiver (Optional). This device has no navigation function. The GPS receiver only receive GPS and display on the recorded video only

LCD Display

A

B



A. Recording status:

The red mark display recording status is on

B. Voice status

:  Record Voice;  Non-recording voice

C. Loop recording, one file per two minute

D. The current view of camera

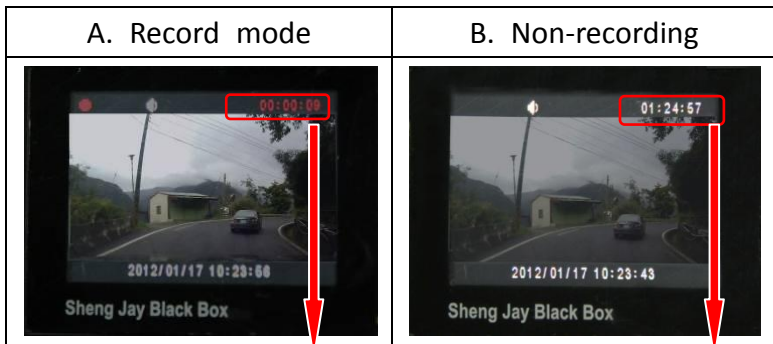
E. Time and date: Display current time and date

Setting mode

How to enter setting mode?

A. During the recording mode, press the “F “key to get to non-recording mode.

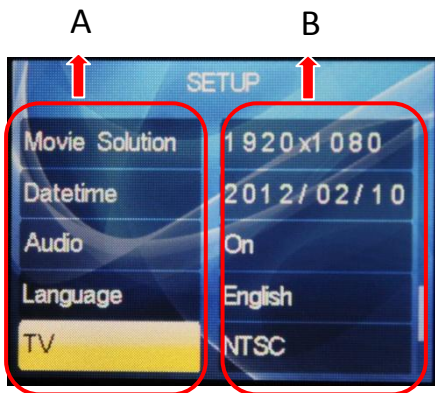
B. In non-recording mode, press “A” key to enter setting mode



(Red format)

(White format)

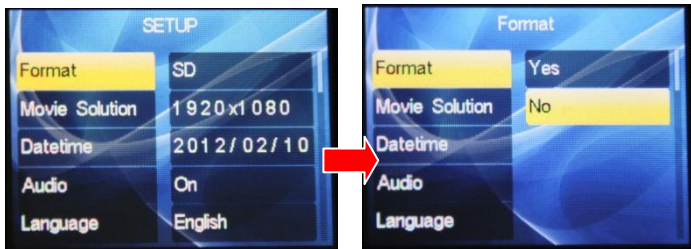
Setting Mode option



A: setting option

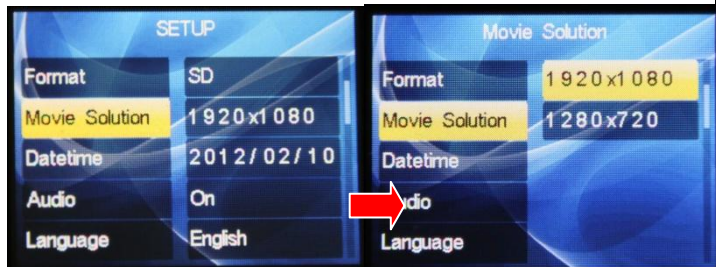
B: current setting

1. Format



Format your SD card. After SD card format completed, press “A” key to back to Non-recording mode and press “F” key to start record the video

2. Movie Resolution



Resolution setting:

- (1) 1920 x 1080(Full HD)
- (2) 1280 x 720(HD)

3. Datetime



Date and time setting

- (1) "D" "E" key to adjust time.
- (2) "A" "B" key to move the option

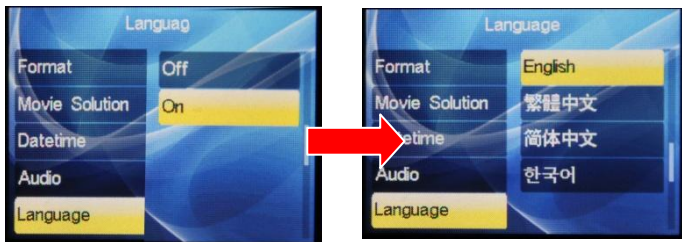
4. Audio



Micphone voice recording setting

- (1) "D" "E" key to select function on or off

5. Language



Language setting:

Select option and press “B” key or “F” key to set the language

6. TV



AV out setting:

(1)NTSC (2)PAL

(3) “D” “E” key to select format

7. About



Verison information

K12-Pro Specification

SD card	SD 卡 · Support 32GB
Language	English · Korea · Simplified Chinese · Traditional Chinese
Power	Input : 12-24V 50/60HZ Output : 5V/1.5A
AV out	Voice, video out
GPS(optional)	External GPS antenna
Camera	500 Mega pixel CMOS SENSOR 120 degree
LCD	2.4"TFT
Operation Environment	0°C~75°C

Video	File system : FAT32 Format : MP4 : 1920*1080,30FPS (10500Kbps avg.) 1280*720P,30FPS(5200Kbps)
Video play	System :PAL//NTSC